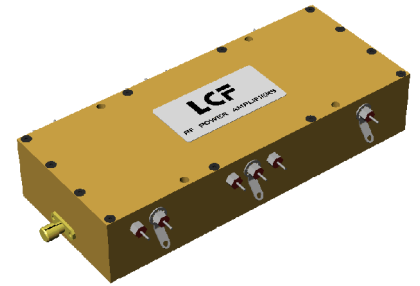


Model A020
P/N 400-100-100-35-A3

RF POWER AMPLIFIER MODULE

100 - 400 MHz
 100Watts

Gain: 35 dB Voltage: 28 VDC



Small Size
High Efficiency
Low Even Order Harmonics
Rugged

PERFORMANCE

PARAMETER	SPECIFICATIONS	COMMENTS
RF Output Power	100 Watts cw minimum	Class AB linear
Frequency Range	100 - 400 MHz	
Gain	35 dB minimum	40 dB typical
Main DC Supply	28 VDC, 12 Amp maximum	8 to 10 Amp typical at 100 W output (see Note 1)
Bias Supply	15 VDC, 10 mA maximum	Provides enable/disable control (see Note 2)
Efficiency	35 - 50 % typical	
Harmonics / Spurious	See Plot / Spurious <-60 dBc	2 nd : -40 to 50 dBc; 3 rd : -30 dBc
In / Out Impedance		Designed for small size, high efficiency; compatible with 50 ohms
RF In / Out Connectors	SMA Female	
DC Connectors	Solderable filtered feed throughs with ground lugs	
Size / Weight	4.84" x 2.0" x 1.0" / < 1 lb.	Excluding connectors and feet
Operating Temperature	-50 ° C to +60° C	Consult technical support for higher temperature operation.
Humidity	95 - 100 %	
Vibration	110 G Shock	
Altitude	50,000 feet	

OPEN ARCHITECTURE FEATURES

1. Separate bias inputs and power supply feed throughs permit either Class A or Class AB biasing. Bias off disables amplifier
2. Separate power supply terminals for each push/pull section permit individual fuse protection.
3. A low loss output matching network provides high efficiency and optimum stability.

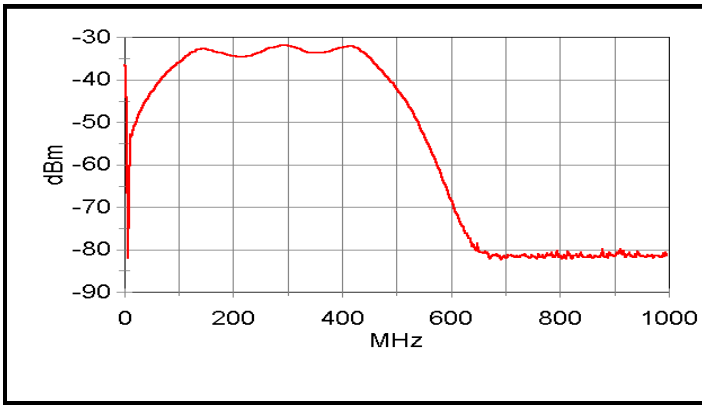
OPTIONS AVAILABLE

- Higher powers through multiple module combining
- Inside wiring with only one DC connection
- Detailed Application Notes
- Transmit/Receive Subsystems
- TTL compatible enable/disable control
- Narrower band optimization. (no additional cost)
- Complete rackmount 120/220 VAC systems
- Test fixture with heat sink, fuse protection, and thermal shutdown

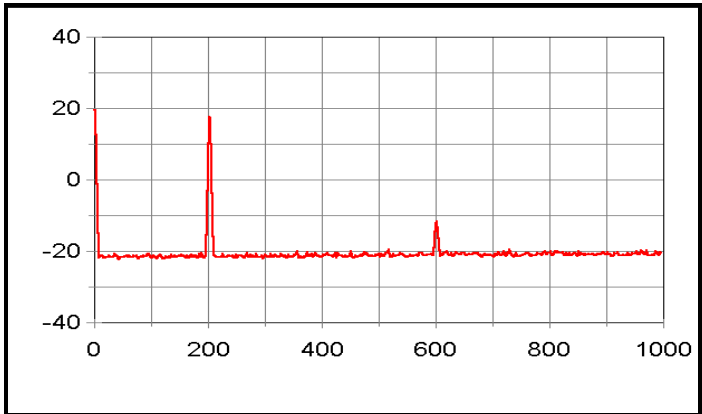
LCF Enterprises
 6180 Commerce Loop
 Post Falls, ID 83854
 E-Mail: info@lcfamps.com

Tel: 208-415-4300
 FAX: 208-415-4306
 Web: www.lcfamps.com

ELECTRICAL PERFORMANCE



Small Signal Gain (-70 db reference)

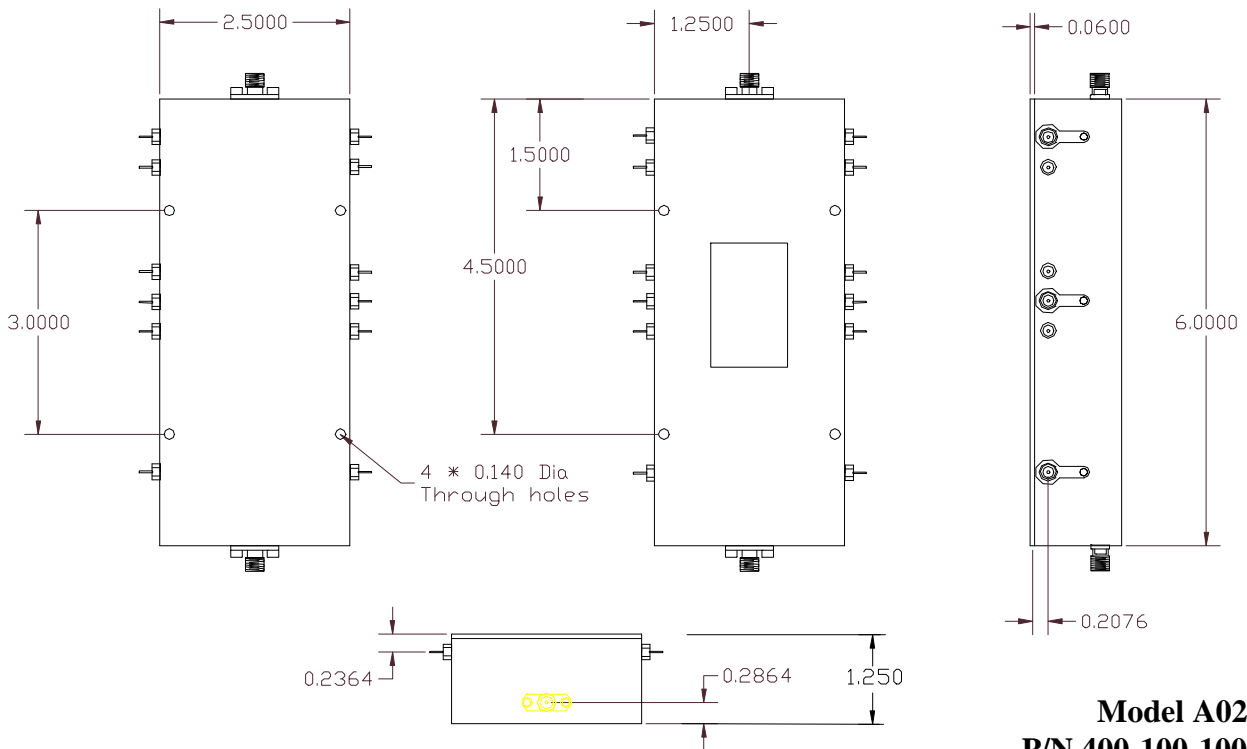


Harmonic Response

HIGH POWER DATA (Typical)

Freq (MHz)	Input Power (dBm)	Output Power (W)	Drain Voltage (V)	DC Current (A)	DC Power (W)	Eff (%)	Gain (dB)
100.00	9.00	101.90	27.35	10.94	299.20	34.10	41.10
150.00	7.40	100.30	27.61	6.67	184.20	54.50	42.60
200.00	8.50	101.30	27.52	8.22	226.20	44.80	41.60
250.00	9.20	101.40	27.49	8.78	241.40	42.00	40.90
300.00	8.90	100.90	27.52	8.24	226.80	44.50	41.10
350.00	10.70	100.30	27.55	7.65	210.80	47.60	39.30
400.00	11.40	100.40	27.52	8.09	222.60	45.10	38.60

MECHANICAL OUTLINE



Model A020
P/N 400-100-100-35-A3